

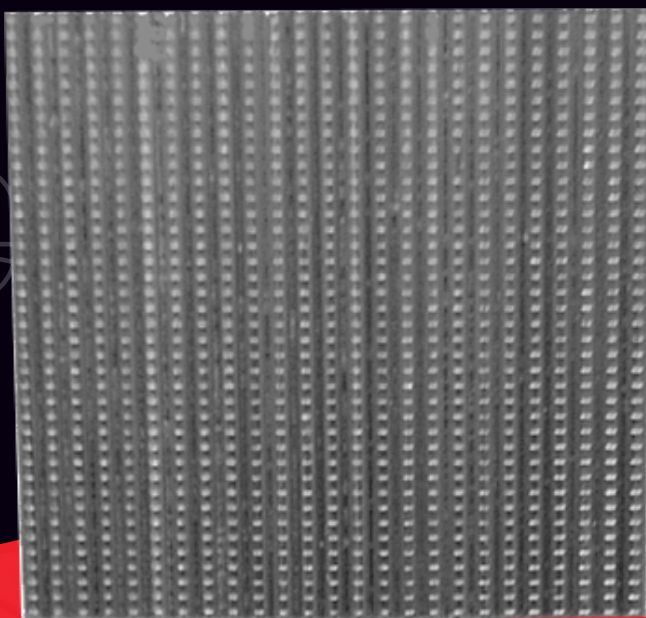


FICHE TECHNIQUE

Pointes SD

Pointes finettes - minibrads - brads

Les pointes SD assurent une fixation solide et discrète pour la menuiserie et les cadres de fenêtre.



22 - 50 mm



2,4 mm



Conditionnement

Aluminium 

POINTES SD | FICHE TECHNIQUE

Description technique

Diamètre du fil	2,4 mm
Longueurs	22 à 50 mm
Matériaux support	Bois

Applications

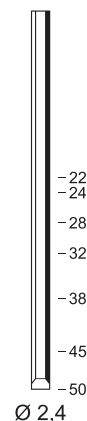
Menuiserie, cadre de fenêtre

Compatibilités








AP - PIN 562 - SPIN - 12

Produit associé

AP 50 P2



Tailles disponibles

Code	Désignation			kg/ 		 (N)*	 (N)*	Classe EUROCODE 5
 6SD221	SD-22	5 000	15 000	5	7	-	-	3 (alu)
6SD241	SD-24	5 000	15 000	6	8	-	-	3 (alu)
6SD281	SD-28	5 000	15 000	7	9	-	-	3 (alu)
6SD321	SD-32	5 000	15 000	8	11	-	-	3 (alu)
6SD381	SD-38	5 000	10 000	6	13	-	-	3 (alu)
6SD451	SD-45	2 500	10 000	7	15	-	-	3 (alu)
6SD501	SD-50	2 500	10 000	8	17	-	-	3 (alu)