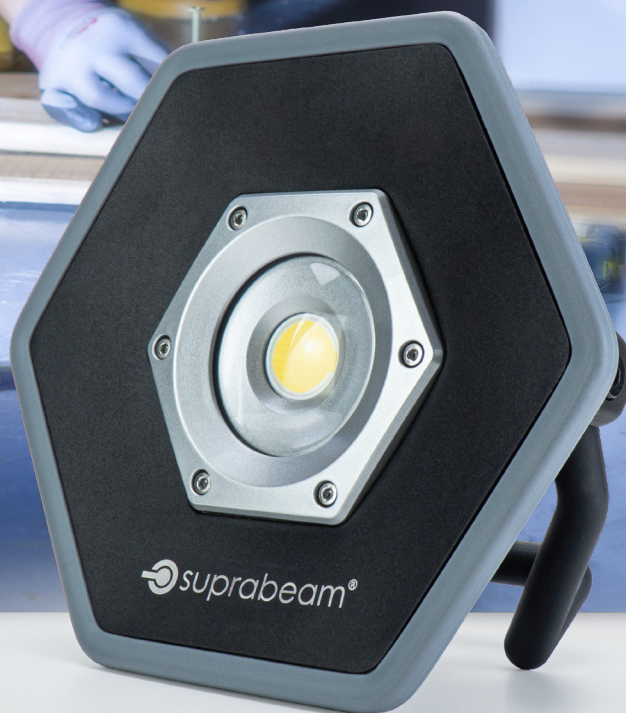


 suprabeam®

ALSAFIX
www.alsafix.com®

W2_r



2200
LUMENS



Li-ion
57.7 Wh



1150 g



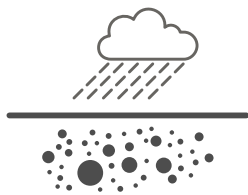
110°



IP65

SB4101201

KEY FEATURES / UNIQUE SELLING POINTS (USP)



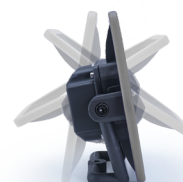
WATER RESISTANT AND DUSTPROOF - IP65

Tested according to IP65 ensures water resistant and dustproof protection. Designed for trouble-free usage in the field even in wet, dirty or dusty conditions.



MAGNETIC (OPTIONAL ACCESSORY)

With our magnet for W2r and W4r (SB4109002) the W2r can be fixed on any magnetic surface to use it as a fixed work light with the perfect angle.



180° ADJUSTABLE LIGHT

The 180° flexible handle on the W2r ensures a very flexible and versatile worklight for multiple situations.



CONTINUOUS USE WITH CABLE

The W2r can be used with the charging cable plugged in. This means the W2r can be used for a whole workday without charging. Light output with cable is reduced to 1000 lumen.



HIGH CRI +80

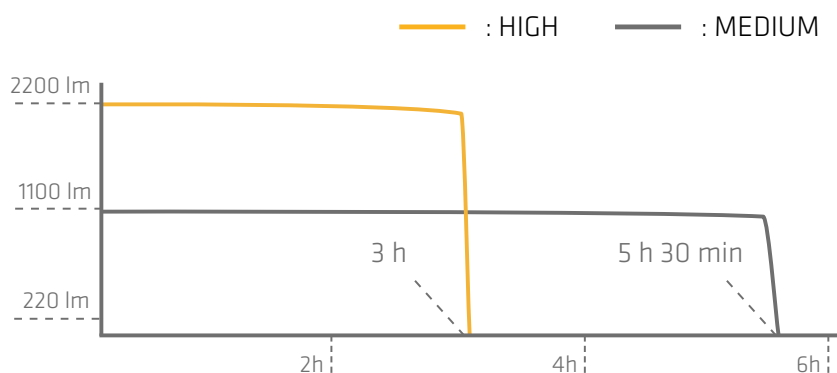
The W2r has High CRI (+80) to bring out the true colors. With the High CRI the W2r provides the most natural colors to make the workday a lot easier.



3 LED BATTERY INDICATORS

The 3 LED battery level indicators will indicate how much power is left in the W2r and when it needs to be recharged.

LIGHT CURVE AND RUNTIMES



HIGH

2200 LUMENS

3 h

MEDIUM

1100 LUMENS

5 h 30 min

LOW

550 LUMENS

11 h

WHAT'S IN THE BOX

WORKLIGHT



ADAPTER



PACKAGING



PACKAGING

Customs Tariff Number:	9405 4990
Packaging:	Carton Box
Single Box Content / Size / Weight:	1 pcs, Height/Width/Depth, 23.5/25/8.5 cm / 1500 g
Master Box Content / Size / Weight:	4 pcs, 36 x 26 x 25 cm / 6.6 kg
Code:	SB4101201
CODE EAN:	5704049908062

SPECIFICATIONS

LED / Focus Configuration:	Super bright COB LED, 6500K
Case Material / Surface Treatment:	Aluminium, 2K Plastic Soft/Hard
Case Color:	Black / Light Grey
Switch:	HIGH, MEDIUM, LOW
Dimensions:	H: 200mm, W: 225mm, D: 70mm
Weight incl. Battery:	1150g
Ingress Protection/Impact Protection Rating:	Water Resistant and Dustproof IP65 / IK07
Temperature (Operation):	-10°C to +40°C

ELECTRONICS

Built in Controller:	Yes, 3-step controller by press
Standard Power Source:	Li-ion 11.1V, 5200 mAh, 57.72 Wh
Charging Time:	3 hours 45 min
Beam / Distance:	180° Adjustable Handle / 65 m
Luminous Flux:	High: 2200lm, Medium: 1100lm, Low: 550lm (cabled output 1000lm)
Lighting Time:	High: 3h, Medium: 5h 30 min, Low: 11h
Accessories Included:	110V -240V AC/DC Charger / 15V 1.5A
Charging Temperature:	-0°C to +45°C

ACCESSORIES

PRODUCT	DESCRIPTION	CODE	WEIGHT	SINGLE BOX SIZE	EAN CODE
	Tripod for single lamp mount	SB4109003	2.6 kg	L: 77 cm, W: 16 cm, H: 16 cm	5704049908116
	Magnet for worklight	SB4109002	118 g	L: 4.5 cm, W: 4.5 cm, H: 4.5 cm	5704049908109

DIMENSIONS



7 cm



20 cm

22.5 cm

Distributed by:

ALSAFIX HEAD OFFICE
114A rue Principale
FR-67240 GRIES
Tel: +33 3 88 72 19 31

ALSAFIX PARIS
34 avenue de Bobigny
FR-93135 NOISY-LE-SEC
Tel: +33 1 48 44 44 59



www.alsafix.com
alsafix@alsafix.com

www.alsafix.com
paris@alsafix.com