

 suprabeam®

**ALSAFIX**  
[www.alsafix.com](http://www.alsafix.com)®

W4<sub>r</sub>



**4400**  
**LUMENS**



Li-ion  
57.7 Wh



1355 g



110°



IP65

SB4101202

## KEY FEATURES / UNIQUE SELLING POINTS (USP)



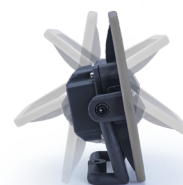
### WATER RESISTANT AND DUSTPROOF - IP65

Tested according to IP65 ensures water resistant and dustproof protection. Designed for trouble-free usage in the field even in wet, dirty or dusty conditions.



### MAGNETIC (OPTIONAL ACCESSORY)

With our magnet for W2r and W4r (SB4109002) the W4r can be fixed on any magnetic surface to use it as a fixed work light with the perfect angle.



### 180° ADJUSTABLE LIGHT

The 180° flexible handle on the W4r ensures a very flexible and versatile worklight for multiple situations.



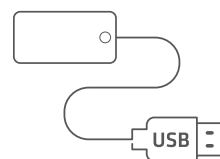
### CONTINUOUS USE WITH CABLE

The W4r can be used with the charging cable plugged in. This means the W4r can be used for a whole workday without charging. Light output with cable is reduced to 1000 lumens.



### HIGH CRI +80

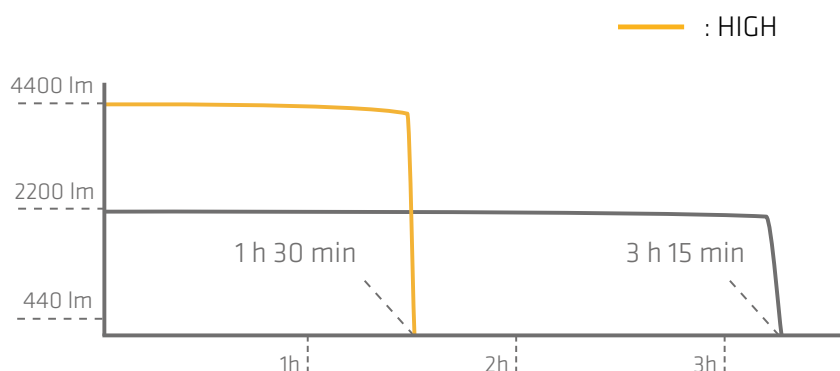
The W4r has High CRI (+80) to bring out the true colors. With the High CRI the W4r provides the most natural colors to make the workday a lot easier.



### POWER BANK FUNCTION

The W4r can be used as a power bank. The W4r has a USB 5V/2A Output on the back for charging a mobile phone.

## LIGHT CURVE AND RUNTIMES



#### HIGH

4400 LUMENS

1 h | 30 min

#### MEDIUM

2200 LUMENS

3 h | 15 min

#### LOW

1100 LUMENS

6 h | 30 min

## WHAT'S IN THE BOX

### WORKLIGHT



### ADAPTER



# PACKAGING



## PACKAGING

Customs Tariff Number:	9405 4990
Packaging:	Carton Box
Single Box Content / Size / Weight:	1 pcs, Height/Width/Depth, 26/28/8.8 cm / 1740 g
Master Box Content / Size / Weight:	4 pcs, 38 x 30.5 x 27.5 cm / 7.6 kg
Code:	SB4101202
CODE EAN:	5704049908079

# SPECIFICATIONS

LED / Focus Configuration:	Super Bright COB LED, 6500K
Case Material / Surface Treatment:	Aluminium, 2K Plastic Soft/Hard
Case Color:	Black / Light Grey
Switch:	HIGH, MEDIUM, LOW
Dimensions:	H: 236.6mm, W: 266mm, D: 59mm
Weight incl. Battery:	1355g
Ingress Protection/Impact Protection Rating:	Water Resistant and Dustproof IP65 / IK07
Temperature (Operation):	-10°C to +40°C

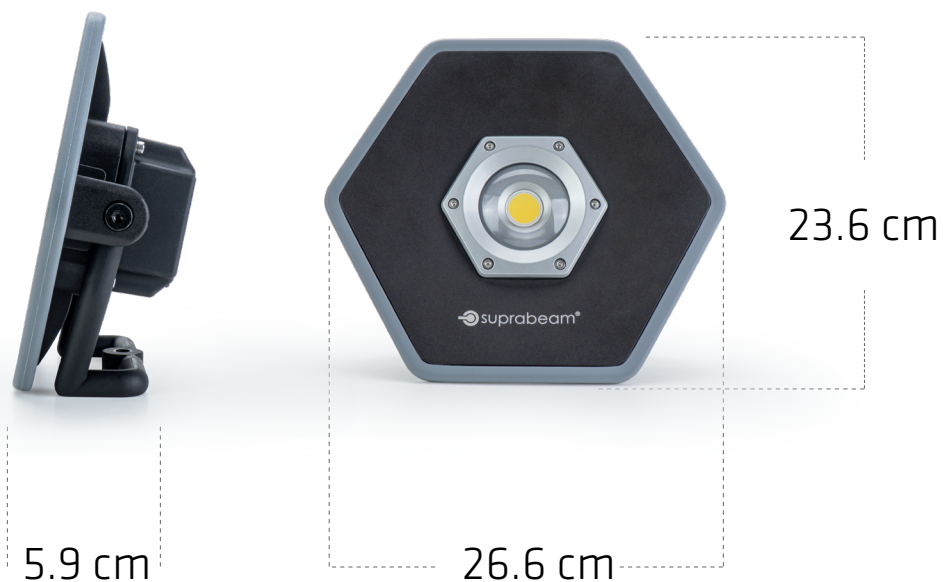
# ELECTRONICS

Built in Controller:	Yes, 3-step Controller by Press
Standard Power Source:	Li-ion 11.1V, 5200 mAh, 57.72 Wh
Charging Time:	3 hours 45 min
Beam Type / Distance:	180° Adjustable Handle / 80 m
Luminous Flux:	High: 4400lm, Medium: 2200lm, Low: 1100lm (cabled output 1000lm)
Lighting Time:	High: 1h 30 min, Medium: 3h 15 min, Low: 6h 30 min
Accessories Included:	110V -240V AC/DC Charger / 15V 1.5A
Charging Temperature:	-0°C to +45°C

# ACCESSORIES

PRODUCT	DESCRIPTION	CODE	WEIGHT	SINGLE BOX SIZE	EAN CODE
	Tripod for single lamp mount	SB4109003	2.6 kg	L: 77 cm, W: 16 cm, H: 16 cm	5704049908116
	Magnet for worklight	SB4109002	118 g	L: 4.5 cm, W: 4.5 cm, H: 4.5 cm	5704049908109

# DIMENSIONS



Distributed by:

ALSAFIX HEAD OFFICE  
114A rue Principale  
FR-67240 GRIES  
Tel: +33 3 88 72 19 31

ALSAFIX PARIS  
34 avenue de Bobigny  
FR-93135 NOISY-LE-SEC  
Tel: +33 1 48 44 44 59



[www.alsafix.com](http://www.alsafix.com)  
alsafix@alsafix.com

[www.alsafix.com](http://www.alsafix.com)  
paris@alsafix.com