

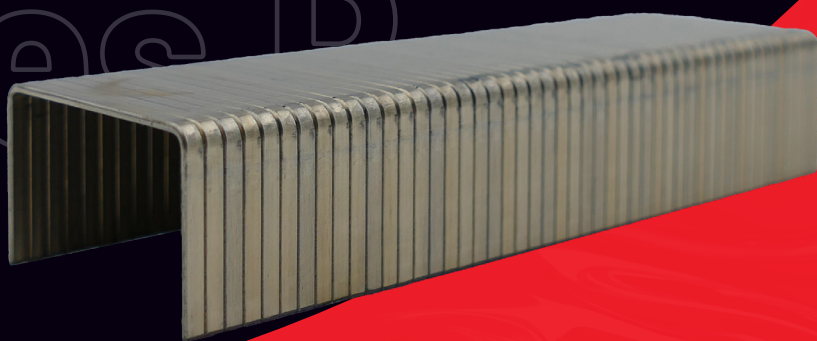


FICHE TECHNIQUE

Agrafes R

Agrafes - Série R

Pour la fermeture de carton.



15 - 22 mm



32 mm



0,90 x 1,90 mm

Cuivrée **CU**



Agrafes R | FICHE TECHNIQUE

Description technique

Largeur	32 mm
Diamètre du fil	0,90 x 1,90 mm
Longueurs	15 à 22 mm
Matériaux support	Carton



Application

Fermeture de cartons d'emballage







Compatibilités

JK 561 - 32

Produits associés

32/18 M1 - 32/18 P1 - 32/22 P1 - B32/22 MV2 - B32/22 PV2

Tailles disponibles

Code	Désignation			kg/ 	 (N)*	 (N)*	Classe EUROCODE 5
 6R-151	R-15	20 000	1 000 000	740	-	-	1 (cuivre)
6R-181	R-18	20 000	900 000	747	-	-	1 (cuivre)
6R-221	R-22	15 000	720 000	677	-	-	1 (cuivre)